



A-STAY

A-STAY ANTWERPEN

EXPERIENCE THE VIBRANT CITY LIFE WITH A-STAY ANTWERP. YOUR PERFECT URBAN HOTEL FOR A CITYTRIP OR BUSINESS CALL. MODERN, HIP AND DESIGNED FOR COMFORT.

THIS IS NOT YOUR ORDINARY HOTEL,
BUT YOUR HOME AWAY FROM HOME



1. GENERAL INFO
2. ROOMS
3. SPACES
4. PRICE & ADDS-ON

1. GENERAL INFO



ROOMS

190 rooms

ROOM TYPE

STAY TWIN

STAY DOUBLE

KING STAY DOUBLE

XL STAY DOUBLE

ACCESSIBLE STAY DOUBLE

KING STAY SOFA DOUBLE

SERVICES & AMENITIES

GYM 24/7

LUGGAGE LOCKERS

LAUNDRY ROOM

UNDERGROUND PARKING (10 SPOTS)

GRAB'N'GO FOODWALL 24/7

DOG FRIENDLY

LATE CHECK-OUT UPON AVAILABILITY

CO-WORKING SPACE

THE SQUARE

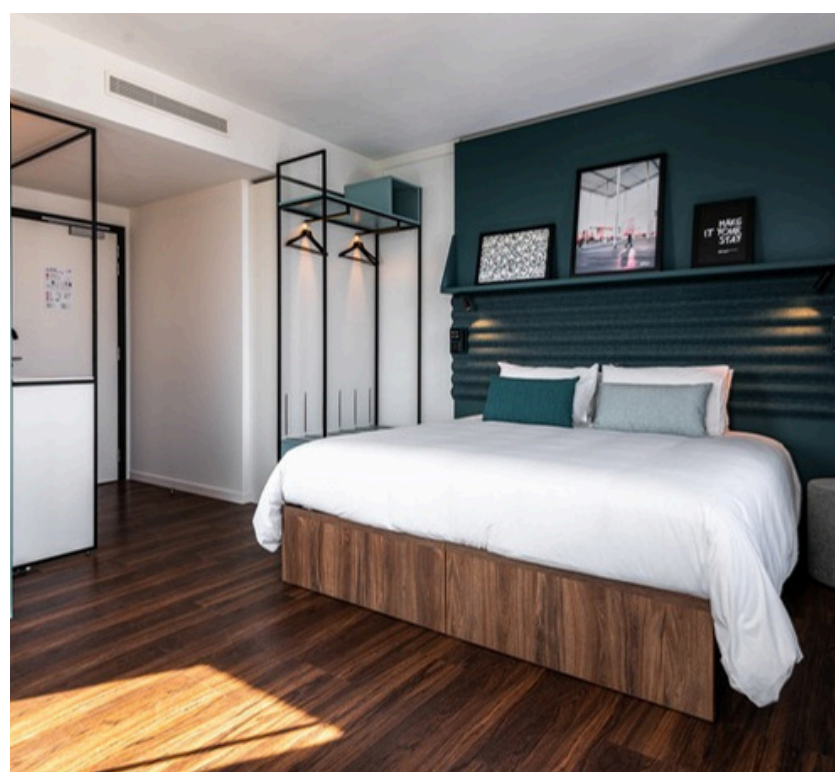
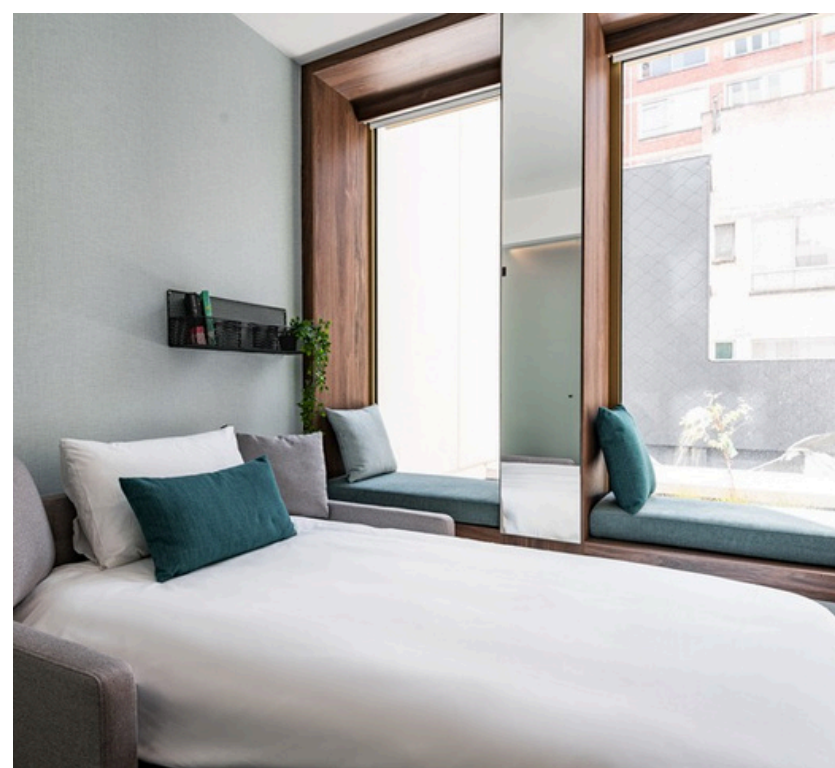
Meeting room

URBAN GARDEN

Private garden

2.ROOMS

ROOM TYPE >





STAY TWIN

18M² room with 2 single beds, measuring 90X200cm each. Located on 1st to 12th floor.

- Smart controls via in-room screen
- Large HD TV with Chromecast
- High speed Wi-Fi
- 3-day cleaning standard
- (daily cleaning on request)
- Small fridge available



STAY DOUBLE

18M² room with 1 double bed,
measuring 180X200cm.
Located on 1st to 12th floor.

- Smart controls via in-room screen
- Large HD TV with Chromecast
- High speed Wi-Fi
- 3-day cleaning standard
- (daily cleaning on request)
- Small fridge available



KING STAY DOUBLE

20M² room with 1 king bed,
measuring 180X200cm.
Located on 1st to 12th floor.

- Smart controls via in-room screen
- Large HD TV with Chromecast
- High speed Wi-Fi
- 3-day cleaning standard
- (daily cleaning on request)
- Small fridge available



XL STAY DOUBLE

22M² room with 1 king bed,
measuring 180X200cm.
Located on 3rd to 12th floor.

- Smart controls via in-room screen
- Large HD TV with Chromecast
- High speed Wi-Fi
- 3-day cleaning standard
- (daily cleaning on request)
- Small fridge available



KING STAY SOFA DOUBLE

23M² room with 1 king bed and 1 sofa bed, measuring 180X200cm and 100X190cm each. Located on 1st to 12th floor.

- Smart controls via in-room screen
- Large HD TV with Chromecast
- High speed Wi-Fi
- 3-day cleaning standard
- (daily cleaning on request)
- Small fridge available



ACCESSIBLE STAY DOUBLE

21M² room with 1 king bed,
measuring 180X200cm.
Located on 1st to 8th floor.

- Smart controls via in-room screen
- Large HD TV with Chromecast
- High speed Wi-Fi
- 3-day cleaning standard
- (daily cleaning on request)
- Small fridge available

3.SPACES

THE SQUARE



BREAKFAST & LUNCH



URBAN GARDEN



URBAN GARDEN



4. PRICE & ADDS-ON

THE SQUARE

225€ HALF DAY

295€ FULL DAY

URBAN GARDEN

450€ Half day

850€ Full day

Included

Flipchart

TV screen with HDMI connection

Paper&Pens

Complimentary water

COFFEE CORNER

Half a day (max 4 hours)

€ 29.00

Full day (max 8 hours)

€ 49.00

COFFEE BREAK

€ 7.50 pp

Use of coffee machine, water
(still/sparkling), fresh fruit & sweet
snacks

LUNCH

€ 25.00 pp

Sandwiches & salad & sweet snack,

Drinks included

(soft drinks/water/coffee or tea)

APERITIF MOMENT

€ 15.00 pp

2 drinks pp (bubbles/wine/beer/NA)
& savoury bites.

In Lounge or Garden

A-STAY
ANTWERP

Need more information?
mice@a-stay.com

